



SAFETYQUIPTM
The safety professionals!

 **BRADY**[®]

HELP STOP THE SPREAD

WITH SOCIAL DISTANCING SIGNS,
FLOOR MARKERS & POSTERS



AVAILABLE FROM YOUR LOCAL SAFETYQUIP STORE



MATERIAL KEY:

SAV = SELF ADHESIVE VINYL
 MTL = METAL
 POL = POLYPROPYLENE
 FLUTE = MULTIFLUTE

MTL UT = METAL WITH ULTRA TUFF OVER LAMINATE
 POL UT = POLYPROPYLENE WITH ULTRA TUFF OVER LAMINATE



Wash Hands Signs & Posters



SIZE (MM)	MATERIAL	CODE
450x600	MTL	840357
450x600	POLY	835884
300x450	MTL	832213
300x450	POLY	835049
225x300	MTL	840359
225x300	POLY	840358
180x250	SAV	838713
300x225	MTL w/ Ultratuff Over laminate	872590
300x225	POLY w/ Ultratuff Over laminate	872589
450x300	MTL w/ Ultratuff Over laminate	872592
450x300	POLY w/ Ultratuff Over laminate	872591
600x450	MTL w/ Ultratuff Over laminate	872594
600x450	POLY w/ Ultratuff Over laminate	872593
125x90	SAV (Pk 5)	840360



SIZE (MM)	MATERIAL	CODE
300x225	POLY	863243



SIZE (MM)	MATERIAL	CODE
300x225	POLY	863244



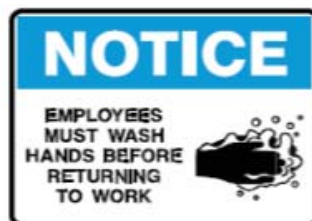
SIZE (MM)	MATERIAL	CODE
350x250	POLY	830440



SIZE (MM)	MATERIAL	CODE
225x300	POLY	863240



SIZE (MM)	MATERIAL	CODE
450x300	MTL	832574
450x300	POLY	835502
250x180	SAV	841474
450x600	POLY	841473



SIZE (MM)	MATERIAL	CODE
180x250	SAV	843762
225x300	MTL	861415
225x300	POLY	861416
300x450	MTL	838005
300x450	POLY	844073
450x600	MTL	838008
450x600	POLY	858476



TOUGHWASH™ SIGNS

- Encapsulated plastic metal detectable safety sign
- Withstands high-pressure water, chemicals and abrasions for enhanced durability

SIZE (MM)	MATERIAL	CODE
NOTICE (Graphic)		
177.8x254	Employees Must Wash Hands Before Returning to Work	877159
355.6x254	Employees Must Wash Hands Before Returning to Work	877160

AVAILABLE FROM YOUR LOCAL SAFETYQUIP STORE



MATERIAL KEY:

SAV = SELF ADHESIVE VINYL
 MTL = METAL
 POL = POLYPROPYLENE
 FLUTE = MULTIFLUTE

MTL UT = METAL WITH ULTRA TUFF OVER LAMINATE
 POL UT = POLYPROPYLENE WITH ULTRA TUFF OVER LAMINATE



Wash Hands Signs & Posters



Your hands carry germs you can't see.

How:

1. Wet your hands with clean water.
2. Soap them up.
3. Scrub them front and back, between your fingers, and under your nails.
4. Scrub for 20 seconds.
5. Rinse with clean water.
6. Dry hands with a clean hand towel.
7. Repeat often.

When:

- After using the bathroom
- Before eating or cooking
- After blowing your nose
- After coughing or sneezing
- After touching animals
- Any time your hands are dirty!

You can stop them from spreading.
Wash your hands!

BRADY 1800 113 896 brady@oz.com.au

HOW TO WASH HANDS CORRECTLY

1. Wet Hands With Hot Water.
2. Apply Soap.
3. Rub Hands Together For 20 Seconds.
4. Clean Under Fingernails.
5. Rinse Thoroughly Under Running Water.
6. Dry Hands

BRADY Made in Australia A37191

SIZE (MM)	MATERIAL	CODE
180x250	SAV	851943
225x300	MTL	862732
225x300	POLY	852237
300x450	MTL	852239
300x450	POLY	852238
450x600	MTL	862734
450x600	POLY	862733



SIZE	MATERIAL	CODE
A2	VINYL BANNER POSTER	879115

SIZE (MM)	MATERIAL	CODE
594x420	VINYL BANNER POSTER	873175

SIZE (MM)	MATERIAL	CODE
200x200	SAV	861913
300x300	MTL	861914

How To Wash Your Hands

Washing your hands correctly will reduce the chance of spreading germs.

1. Wet your hands with warm water and apply soap.
2. Rub soap into palms.
3. Clean the back of hands.
4. Rub between your fingers.
5. Clean your fingertips and thumbs.
6. Ensure nails are clean.
7. Rinse hands well, pointing fingers downwards.

SIZE (MM)	MATERIAL	CODE
420x600	SEMI-RIGID PVC POSTER	853532

Personal Hygiene

Certain bacteria can remain active on our hands for up to three hours. During this time bacteria can spread to everything we touch. This is particularly dangerous in catering environments where germs can multiply on food.

How To Wash Your Hands

1. Wet your hands with warm water and apply soap.
2. Rub soap into palms.
3. Clean the back of hands.
4. Rub between your fingers.
5. Clean your fingertips and thumbs.
6. Ensure nails are clean.
7. Rinse hands well, pointing fingers downwards.

Personal Hygiene

Always cover the respiratory tract when coughing, sneezing, or blowing your nose. Use tissues or your elbow. Dispose of tissues immediately. Wash hands immediately after coughing or sneezing.

Hand Washing

Wash hands for 20 seconds. Use warm water and soap. Rub hands together thoroughly. Rinse well. Dry hands completely.

Hand Sanitiser

Use hand sanitiser if soap and water are not available. Rub hands together for 20 seconds. Avoid touching your face.

No smoking

Do not smoke in work areas. Smoking is prohibited in many work environments.

SIZE (MM)	MATERIAL	CODE
420x590	LAMINATED POSTER	851916

AVAILABLE FROM YOUR LOCAL SAFETYQUIP STORE



MATERIAL KEY:

SAV = SELF ADHESIVE VINYL
 MTL = METAL
 POL = POLYPROPYLENE
 FLUTE = MULTIFLUTE

MTL UT = METAL WITH ULTRA TUFF OVER LAMINATE
 POL UT = POLYPROPYLENE WITH ULTRA TUFF OVER LAMINATE



Sanitising Hands Signs



SIZE (MM)	MATERIAL	CODE
300x450	POLY	879072
225x300	POLY	879073
180x250	SAV	879074
225x225	POLY - DOUBLE SIDED SIGN	879075



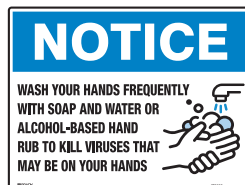
SIZE (MM)	MATERIAL	CODE
300x450	POLY	879062
225x300	POLY	879063
180x250	SAV	879064



SIZE (MM)	MATERIAL	CODE
600x450	FLUTE	879103
450x300	FLUTE	879139
450x300	POLY	879105
300x225	POLY	879106
250x180	SAV	879107



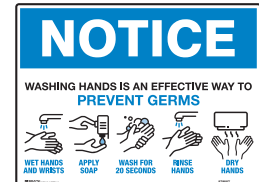
SIZE (MM)	MATERIAL	CODE
600x450	FLUTE	879098
450x300	FLUTE	879099
450x300	POLY	879100
300x225	POLY	879101
250x180	SAV	879102



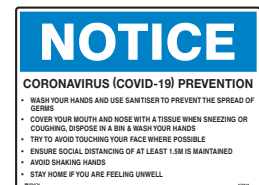
SIZE (MM)	MATERIAL	CODE
600x450	FLUTE	879092
450x300	FLUTE	879093
450x300	POLY	879095
300x225	POLY	879096
250x180	SAV	879097



SIZE (MM)	MATERIAL	CODE
300x450	POLY	879068
225x300	POLY	879069
180x250	SAV	879070



SIZE (MM)	MATERIAL	CODE
600x450	FLUTE	879087
450x300	FLUTE	879088
450x300	POLY	879089
300x225	POLY	879090
250x180	SAV	879091



SIZE (MM)	MATERIAL	CODE
600x450	FLUTE	879108
450x300	FLUTE	879109
450x300	POLY	879110
300x225	POLY	879111
250x180	SAV	879112



SIZE (MM)	MATERIAL	CODE
300x450	POLY	879065
225x300	POLY	879066
180x250	SAV	879067

AVAILABLE FROM YOUR LOCAL SAFETYQUIP STORE



MATERIAL KEY:

SAV = SELF ADHESIVE VINYL
 MTL = METAL
 POL = POLYPROPYLENE
 FLUTE = MULTIFLUTE

MTL UT = METAL WITH ULTRA TUFF OVER LAMINATE
 POL UT = POLYPROPYLENE WITH ULTRA TUFF OVER LAMINATE



Social Distancing Signs



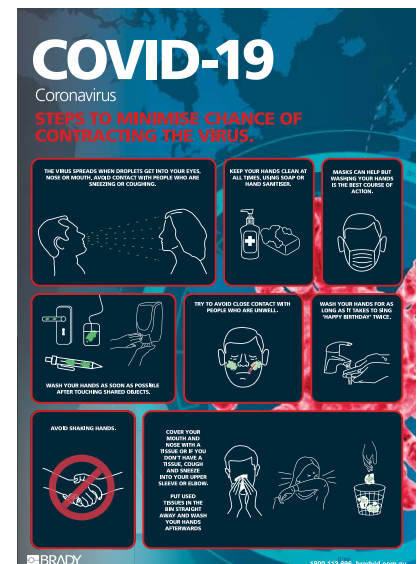
SIZE (MM)	MATERIAL	CODE
450x600	FLUTE	879123
300x450	FLUTE	879124
300x450	POLY	879125
225x300	POLY	879126
180x250	SAV	879127

SIZE (MM)	MATERIAL	CODE
600x450	FLUTE	879118
450x300	FLUTE	879119
450x300	POLY	879120
300x225	POLY	879121
250x180	SAV	879122



SIZE (MM)	MATERIAL	CODE
600x450	FLUTE	879128
450x300	FLUTE	879129
450x300	POLY	879131
300x225	POLY	879132
250x180	SAV	879133

SIZE (MM)	MATERIAL	CODE
600x450	FLUTE	879134
450x300	FLUTE	879135
450x300	POLY	879136
300x225	POLY	879137
250x180	SAV	879138



SIZE	MATERIAL	CODE
A2	POSTER	879116

AVAILABLE FROM YOUR LOCAL SAFETYQUIP STORE



MATERIAL KEY:

SAV = SELF ADHESIVE VINYL
 MTL = METAL
 POL = POLYPROPYLENE
 FLUTE = MULTIFLUTE

MTL UT = METAL WITH ULTRA
 TUFF OVER LAMINATE
 POL UT = POLYPROPYLENE WITH
 ULTRA TUFF OVER LAMINATE



Floor Markers



SIZE (MM)	MATERIAL	CODE
440mm DIA.	SAV FLOOR MARKER*	879079



SIZE (MM)	MATERIAL	CODE
440mm DIA.	SAV FLOOR MARKER*	879084



SIZE (MM)	MATERIAL	CODE
440mm DIA.	SAV FLOOR MARKER*	879081



SIZE (MM)	MATERIAL	CODE
440mm DIA.	SAV FLOOR MARKER*	879080



SIZE (MM)	MATERIAL	CODE
440mm DIA.	SAV FLOOR MARKER*	879083



SIZE (MM)	MATERIAL	CODE
200x200	SAV FLOOR MARKER*	861913



SIZE (MM)	MATERIAL	CODE
440mm DIA.	SAV FLOOR MARKER*	879078



SIZE (MM)	MATERIAL	CODE
440mm DIA.	SAV FLOOR MARKER*	879085

AVAILABLE FROM YOUR LOCAL SAFETYQUIP STORE